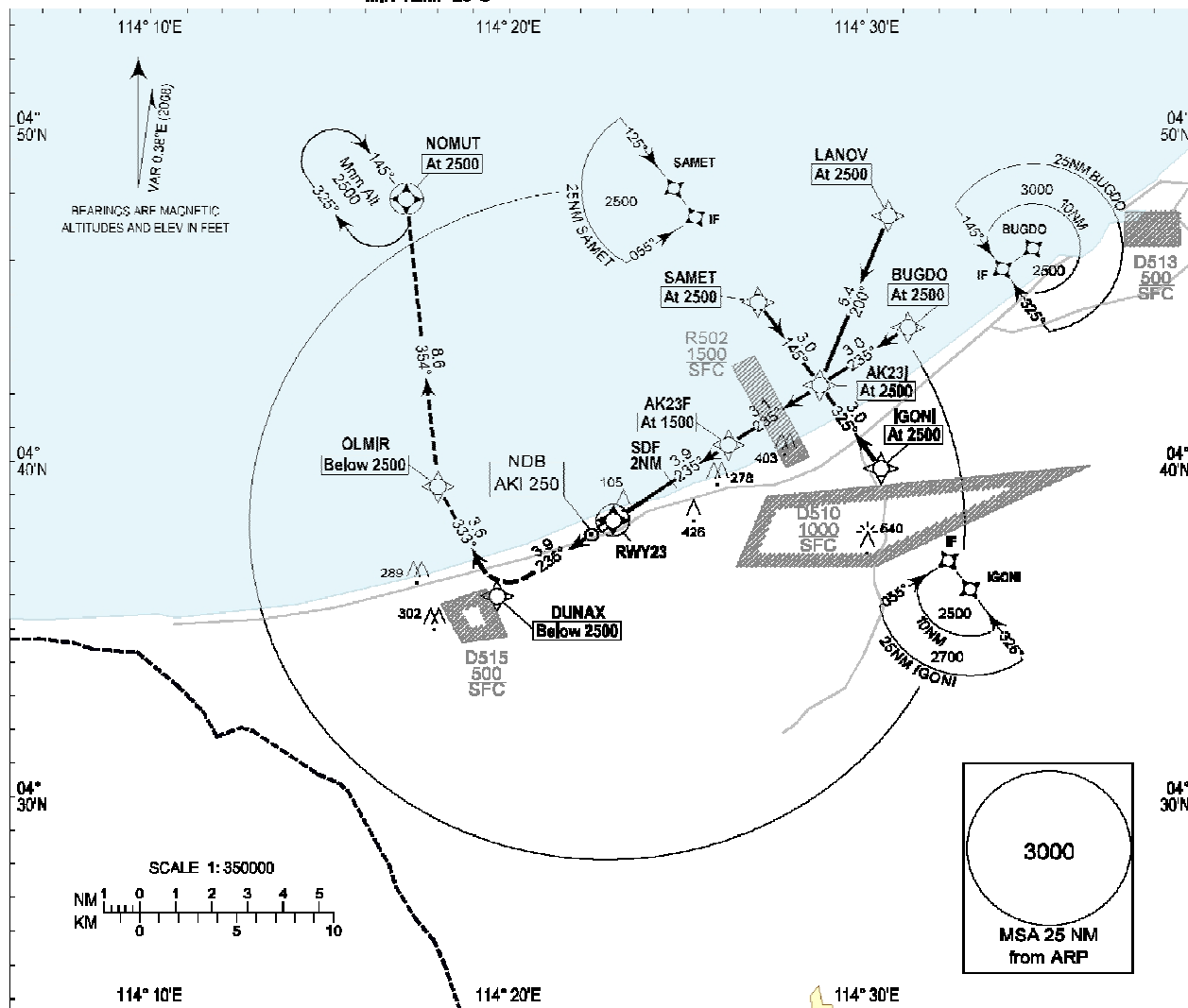


**INSTRUMENT
APPROACH
CHART - ICAO**

AERODROME ELEV 9ft
HEIGHTS RELATED TO
THR RWY 23 - ELEV 9ft
MIN TEMP 20°C

TWR 122.10

**ANDUKI
RNAV (GNSS)
(CAT H) RWY 23**

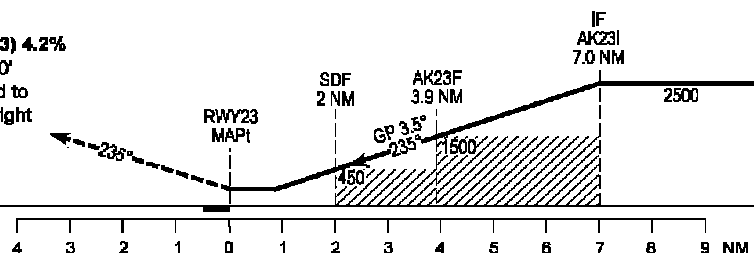


Transition Altitude: 11000ft

Note: Recommended profile of 3.5° (6.12%).

MISSED APPROACH (RWY23) 4.2%
Continuous initial climb to 2500'
required - Climb straight ahead to
DUNAX then right to OLMIR, right
to NOMUT and hold.

RDH 50 FT



OCA(H)

Category of Aircraft	H	NM TO THR						
		7	8	5	4	3	2	1
LNAV/VNAV	380 (371)							
LNAV	410 (401)	2860 (2851)	2290 (2281)	1920 (1911)	1550 (1541)	1170 (1161)	800 (791)	430 (421)